

Sheffield City Council OUR PLAN 2015-18



Page 3

An in touch organisation

To listen and be responsive, so services are designed to meet the increasingly diverse needs of individuals in Sheffield

Working with individuals, communities and our partners we will:

- Make the best use of public money to have the greatest impact for Sheffield
- Continuously respond to the changing needs of our customers
- Make sure we listen, understand and respond to what people are telling us, treating them with respect at all times
- Value our employees who are vital to delivering high quality services for Sheffield
- Make sure our services can change to deliver the best outcomes for Sheffield people
- Provide more of our services online, as we know people want to access services at a time that suits them
- Demand more powers from Government and build on the Devolution Deal, so that Sheffield can better shape its own future



Sheffield is a great city and our Corporate Plan focuses on what makes Sheffield a unique, ambitious and inspiring city in 2015 and beyond.

Sheffield is a major European city. We are proud to be the UK's greenest city and we are often considered one of the happiest. We are also striving to be Britain's fairest city.

Local government is changing, but we have bold ambitions. We won't let obstacles stand in the way of delivering our promises or our aspiration: **to be the best we can be – as individuals and communities, as a council and as a city.**

The Corporate Plan sets our direction and priorities. The council exists to serve the people of Sheffield, so we will focus on helping people who live, work, learn and visit our city to enjoy what Sheffield has to offer. But this plan is not just about the council, it is about what we want for Sheffield and its people and what, together with others, we want to achieve over the next three years.

Thriving neighbourhoods and communities

For people to have a good quality of life and feel proud of where they live, with access to great schools and local amenities

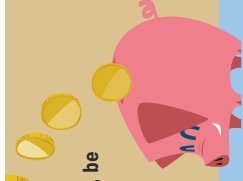


Working with others across the city we will:

- Have good or outstanding schools in all our communities to support children, young people and families achieve their full potential
- Better support children at risk of under-achievement to narrow the gap in outcomes
- Create affordable housing, with 750 new council houses and support developers to build 4,600 new homes across the city
- Sustain high quality parks and green spaces
- Build new leisure centres at High Green and Graves and increase access to facilities, with joint investment in community football pitches
- Keep Sheffield's streets and open spaces clean and tidy
- Complete the resurfacing of 1,180 miles of road, as part of our Streets Ahead programme
- Work with communities to improve community safety

Strong economy

To achieve our economic potential, be well-connected, with skilled individuals and growing businesses, playing a distinctive role in the global economy



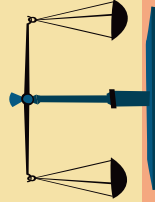
Working with others in the City

Region we will:

- Attract investment across the city and support businesses to start and to grow; creating 28,000 jobs across the city region
- Attract more visitors to Sheffield, by increasing the city's vibrancy and raising the city's profile
- Maintain and build on our national top ten position for young people in apprenticeships
- Invest millions of pounds to give people the skills they need to get a good job
- Make sure 97.9% of businesses and residents in South Yorkshire can access super-fast broadband
- Develop Don Valley and the M1 corridor as a leading European centre for advanced manufacturing
- Attract individuals and businesses to Sheffield as the UK's top Outdoor City
- Work with businesses to boost exports

Tackling inequalities

To make it easier to overcome obstacles by investing in the most deprived communities and supporting individuals to help themselves and achieve their full potential



Working with others we will:

- Work towards Sheffield being a Living Wage city, promoting the benefits to employers, including our contractors and persuading the city's public sector organisations to sign up by 2018
- Work with communities to strengthen our approach to cohesion and stigmatisation
- Support Sheffield Money to provide 5,000 local people with affordable loans
- Support up to 2,000 teenagers and young adults to access education, employment and training
- Help those who face obstacles to find lasting work, including young people, disabled people and those with mental health conditions
- Proactively work with others to deliver our Tackling Poverty Strategy and break the link between being poor as a child and growing up to live in poverty as an adult

Better health and wellbeing

To promote good health, prevent and tackle ill-health by providing early help, earlier in life; particularly for those at risk of illness or dying early

Working with Sheffield's Joint Health and Wellbeing Board we will:

- Help thousands of people achieve a greater level of wellbeing
- Stand by our commitment to keep all children safe
- Help hundreds more children in Sheffield have a great start and be ready for learning and life
- Support children and young people with special educational needs and disabilities to live happy, healthy, fulfilling lives
- Help thousands of people to get early help and access services to remain independent, reducing hospital admissions
- Make sure people can access the care and support they need to live fulfilling lives
- Introduce 'Five Ways to Wellbeing' to help people improve their mental and emotional wellbeing and reduce loneliness and isolation
- Provide direct support to more carers than ever before



For more info:

The full Corporate Plan is available on our website:

www.sheffield.gov.uk

Corporate Plan Overview

OUR PRIORITIES

An in-touch organisation • Strong economy • Thriving neighbourhoods and communities
Better health and wellbeing • Tackling inequalities

What's changing...



Financial pressures



Changing population



Changing legislation

What's our response...



More financially self-sufficient Council
through economic growth



Providing early help
earlier in life, so people can help themselves



Working differently
across public services and with partners



Continuing services that people rely on...